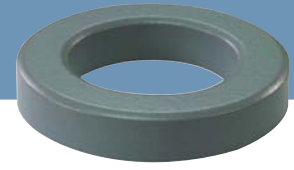


OD 571

ID 26.39mm
HT 15.24mm



Core dimensions and Physical specifications

Before Coating			After Coating			Physical specifications			
OD, max	ID, min	HT, max	OD, max	ID, min	HT, max	Cross Section (Ae)	Path Length (le)	Window Area (Wa)	Volume (V)
57.15mm	26.39mm	15.24mm	58mm	25.6mm	16.1mm	2.29cm ²	12.5cm	5.15cm ²	28.625cm ³
2.25in	1.039in	0.6in	2.283in	1.008in	0.634in	0.355in ²	4.921in	1016000cmil	1.747in ³

Core Part Number

Permeability (μ)	A_L (nH/N ²)	Part Number				DC Resistance (Rdc) per Inductance (Ω /mH)
		MPP	High Flux	Sendust	SFlux	
26	60	OR571M026	OR571H026	OR571S026	-	0.0578
60	138	OR571M060	OR571H060	OR571S060	OR571F060	0.0251
75	172	-	-	OR571S075	-	0.0201
90	207	-	-	OR571S090	OR571F090	0.0167
125	287	OR571M125	OR571H125	OR571S125	-	0.0120
147	338	OR571M147	-	-	-	0.0102
160	368	OR571M160	-	-	-	0.0094
173	-	-	-	-	-	0.0087
200	-	-	-	-	-	0.0075

Winding Information

AWG wire		Single layer		AWG wire		Single layer		AWG wire		Single layer	
No.	Dia.(cm)	Turns	Rdc, Ω	No.	Dia.(cm)	Turns	Rdc, Ω	No.	Dia.(cm)	Turns	Rdc, Ω
8	0.334	20	0.0027	14	0.171	43	0.0230	20	0.088	88	0.1890
9	0.298	23	0.0039	15	0.153	49	0.0330	21	0.079	99	0.2690
10	0.267	26	0.0055	16	0.137	55	0.0469	22	0.070	111	0.3810
11	0.238	30	0.0080	17	0.122	62	0.0664	23	0.063	124	0.5340
12	0.213	34	0.0115	18	0.110	70	0.0948	24	0.057	138	0.7520
13	0.190	39	0.0165	19	0.098	78	0.1330	25	0.051	156	1.0700

A_L value vs. DC Bias characteristics

