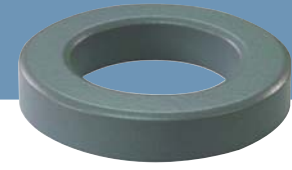


OD 330

ID 19.94mm
HT 10.67mm



Core dimensions and Physical specifications

Before Coating			After Coating			Physical specifications			
OD, max	ID, min	HT, max	OD, max	ID, min	HT, max	Cross Section (Ae)	Path Length (le)	Window Area (Wa)	Volume (V)
33.02mm	19.94mm	10.67mm	33.83mm	19.3mm	11.61mm	0.672cm ²	8.15cm	2.93cm ²	5.4768cm ³
1.3in	0.785in	0.42in	1.332in	0.76in	0.457in	0.104in ²	3.209in	578000cmil	0.334in ³

Core Part Number

Permeability (μ)	A_L (nH/N ²)	Part Number				DC Resistance (Rdc) per Inductance (Ω / mH)
		MPP	High Flux	Sendust	SFlux	
26	28	OR330M026	OR330H026	OR330S026	-	0.1718
60	61	OR330M060	OR330H060	OR330S060	OR330F060	0.0744
75	76	-	-	OR330S075	-	0.0595
90	91	-	-	OR330S090	OR330F090	0.0496
125	127	OR330M125	OR330H125	OR330S125	-	0.0357
147	150	OR330M147	OR330H147	-	-	0.0304
160	163	OR330M160	OR330H160	-	-	0.0279
173	176	OR330M173	-	-	-	0.0258
200	-	-	-	-	-	0.0223

Winding Information

AWG wire		Single layer		AWG wire		Single layer		AWG wire		Single layer	
No.	Dia.(cm)	Turns	Rdc, Ω	No.	Dia.(cm)	Turns	Rdc, Ω	No.	Dia.(cm)	Turns	Rdc, Ω
8	0.334	15	0.0012	14	0.171	32	0.0100	20	0.088	65	0.0815
9	0.298	17	0.0017	15	0.153	36	0.0142	21	0.079	74	0.1180
10	0.267	19	0.0024	16	0.137	41	0.0204	22	0.070	83	0.1660
11	0.238	22	0.0034	17	0.122	46	0.0288	23	0.063	92	0.2310
12	0.213	25	0.0055	18	0.110	52	0.0411	24	0.057	103	0.3280
13	0.190	28	0.0069	19	0.098	58	0.0578	25	0.051	116	0.4650

A_L value vs. DC Bias characteristics

