

Upgrade

GL

Screw Terminal Type, Long Life Series

Long Life



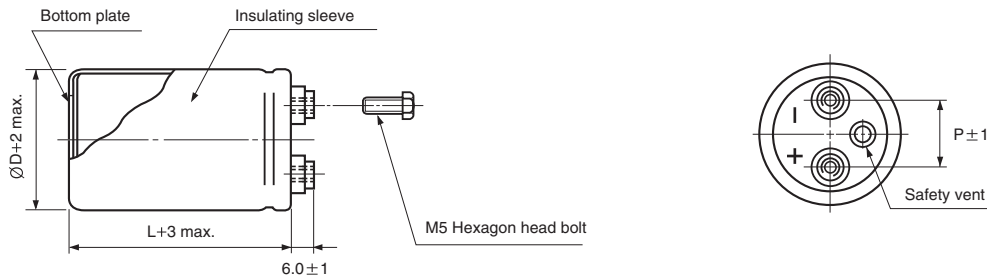
- Screw terminal series in compact case sizes
- High reliability, long life guaranteed for 20000 hours load life at 85°C
- Suited for use in industrial power supplies for inverters
- Complied to the RoHS directive

GF → GL
Long life

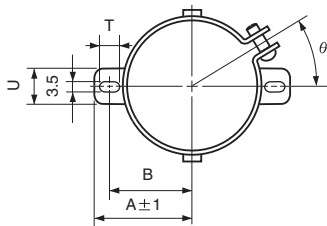
Item	Characteristics	
Operating temperature range	-25 ~ +85°C	
Capacitance tolerance	±20% at 120Hz, 20°C	
Leakage current max.	$I=3\sqrt{CV}$ (µA) (after 5 minutes)	
Dissipation factor max.	0.25 max. at 120Hz, 20°C	
Load life (after application of the rated voltage for 20000 hours at 85°C)	Leakage current	Less than specified value
	Capacitance change	Within ±30% of initial value
	tanδ	Less than 300% of specified value
Shelf life (at 85°C)	After 1000 hours no load test, leakage current, capacitance and tanδ are same as load life value. The measurement shall be performed at 20°C by the KS C IEC 60384 - 4	

● DRAWING

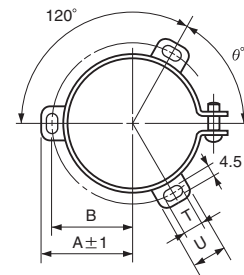
Unit : mm



● TWO LEGS ANGLE



● THREE LEGS ANGLE



● TWO LEGS ANGLE SIZE TABLE

ØD	B	A	T	U	θ°	P
51	33.6	39.9	6	14	30	22
63.5	40.8	46.8	6	14	30	28.6

● THREE LEGS ANGLE SIZE TABLE

ØD	B	A	T	U	θ°	P
51	32.9	38.9	7	12	60	22
63.5	38.4	45.3	7	14	60	28.6
76.2	44.5	51.5	8	16	60	31.8
89	50.8	61	8	16	60	31.8

LARGE ALUMINUM ELECTROLYTIC CAPACITORS

GL series

● DIMENSIONS & MAXIMUM PERMISSIBLE RIPPLE CURRENT

WV Item μF	350		400		450	
	∅D×L (mm)	Ripple current (A rms) 85°C 120Hz	∅D×L (mm)	Ripple current (A rms) 85°C 120Hz	∅D×L (mm)	Ripple current (A rms) 85°C 120Hz
1500					51 × 110	7.3
1800			51 × 110	8.2	51 × 130	8.7
2200	51 × 110	8.8	51 × 130	9.3	63.5 × 110	9.6
2700	51 × 130	10.3	63.5 × 110	10.8	63.5 × 130	11.3
3300	63.5 × 100	11.8	63.5 × 130	12.9	76.2 × 110	13.5
3900	63.5 × 110	13.0	76.2 × 100	15.0	76.2 × 130	15.3
4700	76.2 × 100	15.2	76.2 × 130	16.0	76.2 × 150	16.9
5600	76.2 × 110	18.3	76.2 × 150	18.3	76.2 × 160	21.8
6800	76.2 × 130	20.5	76.2 × 160	21.2	89 × 150	23.6
8200	76.2 × 150	23.5	89 × 150	24.6	89 × 160	26.5
10000	89 × 150	27.1	89 × 160	29.3		
12000	89 × 160	32.2				

● FREQUENCY COEFFICIENT OF PERMISSIBLE RIPPLE CURRENT

WV	Frequency	50Hz	120Hz	300Hz	1kHz	3kHz
350 ~ 450		0.8	1.0	1.1	1.3	1.4